

Duluth Campus

Department of Anthropology,
Sociology & Criminology
College of Liberal Arts

228 Cina Hall
1123 University Drive
Duluth, Minnesota 55812-3306

Office: 218-726-7551
<http://www.d.umn.edu/socanth>
Email: socath@d.umn.edu

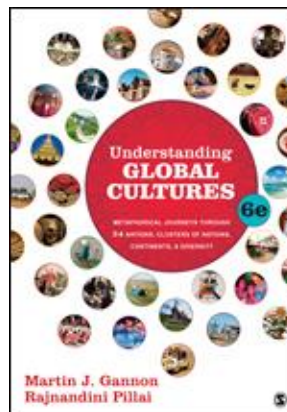
1 September 2019

Global Cultures Week 2

 canvas
<<https://canvas.umn.edu/>>

Introduction to Anthropology / Orientation to the Course (cont.) and Major Characteristics of Anthropology




NOTE: Class this week is on-line only.

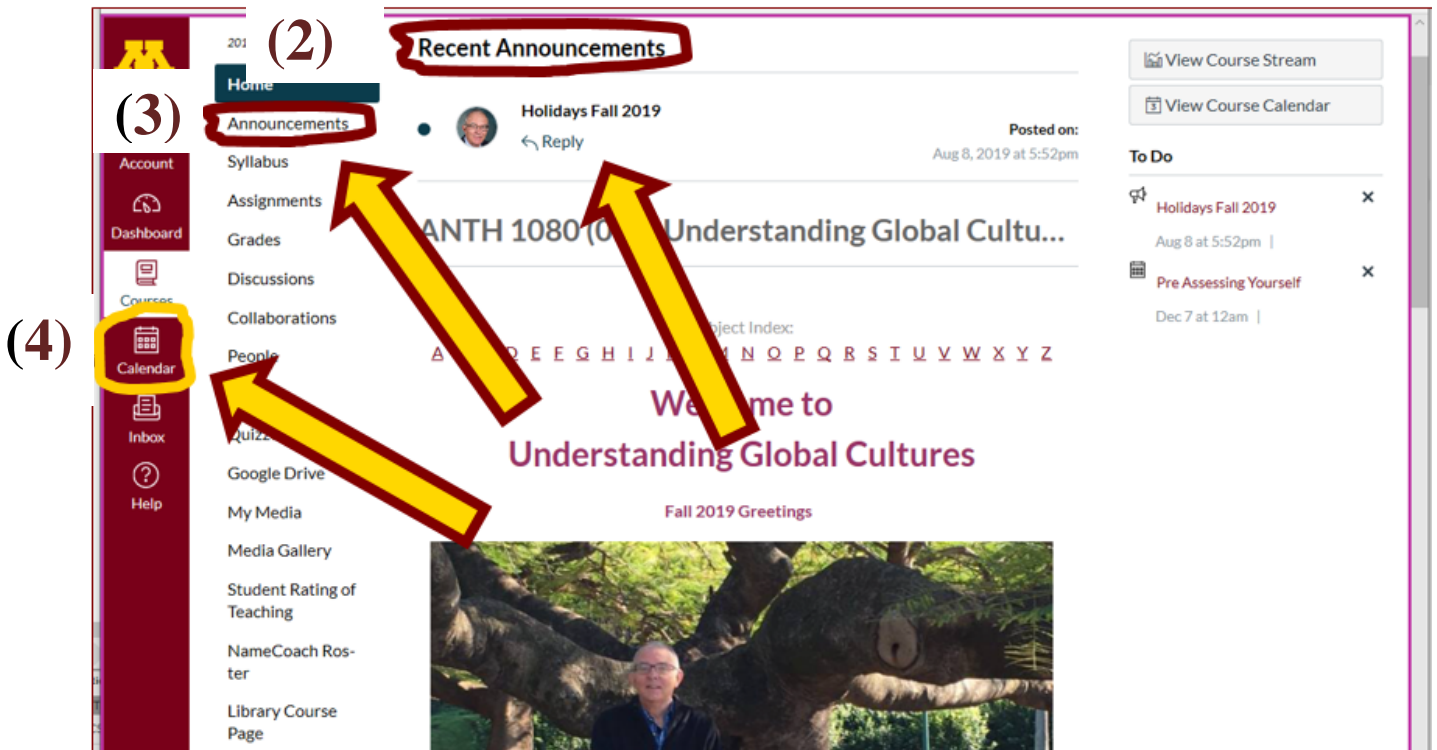


I hope your first week with Global Cultures went well, and that it has been enjoyable, and that you are liking the readings and other materials.

Each week as we go along I will send you a **memo like this about the highlights for the coming week, usually on Sunday**. The memos will talk about the main items and issues for the weeks, and they will also contain a few important reminders.

Weekly Memos

These memos will also be available in your (1) **UM e-mail folder** , in the (2) **“Recent Announcements”** section at the very top of your  **“Home”** page, in the (3) **“Announcements”** page (accessed *via* the second item on the *Course* Navigation Panel), and (4) **on your**  **“Calendar”** *via* the *Global* Navigation Panel.



Canvas Phone Apps

Your *Dashboard* screen on your Canvas phone app (available *via* the [What is the Canvas Student app?](#) link) looks something like this:

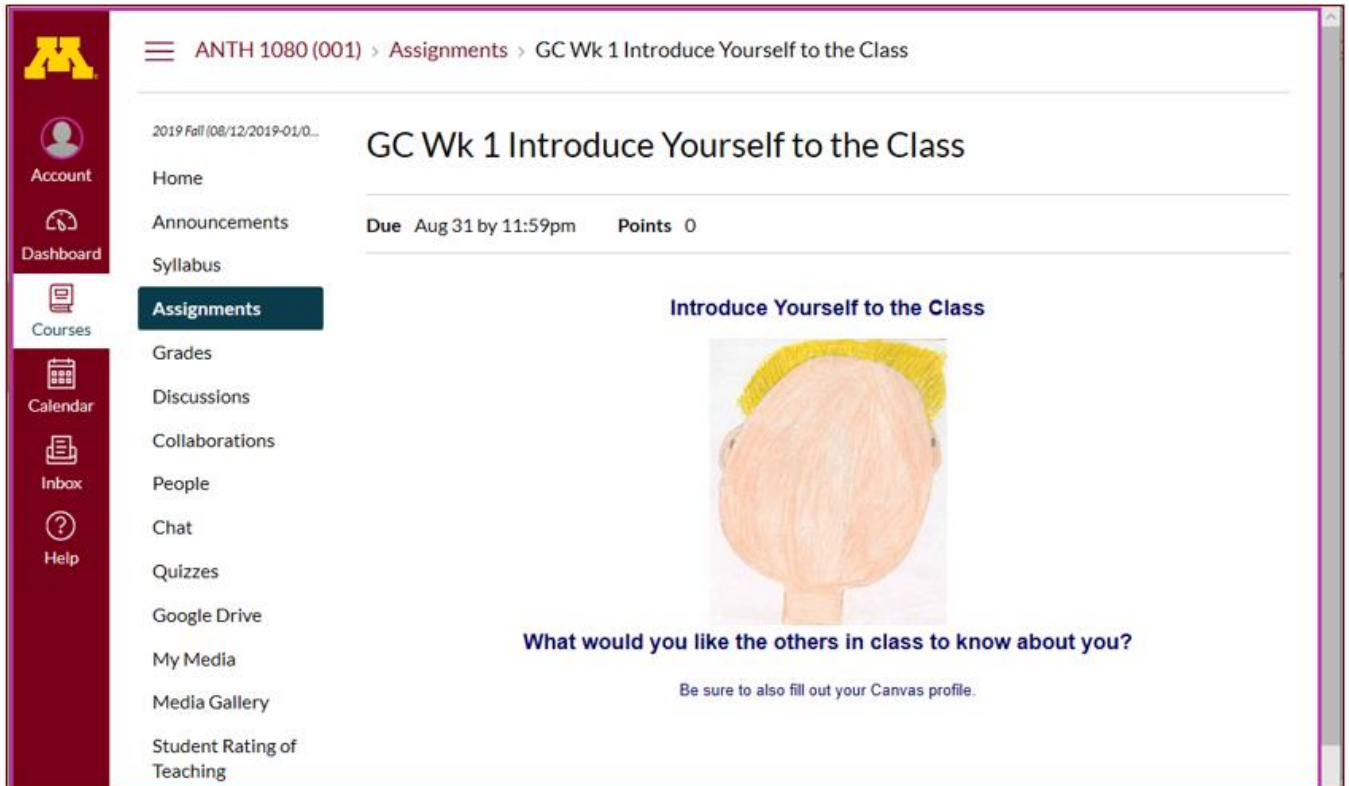


Your “*Home*” page on your Canvas phone app looks something like this:



Your Classmates

If you are curious about **the others in class**, have a look at the **"Introduce Yourself"** entries in the **"Discussion"** section of your  **canvas** folder.



The screenshot shows a Canvas LMS interface. On the left is a dark red sidebar with navigation icons for Account, Dashboard, Courses, Calendar, Inbox, and Help. The main content area is white and shows the breadcrumb path: ANTH 1080 (001) > Assignments > GC Wk 1 Introduce Yourself to the Class. Below the breadcrumb, there's a header for the assignment: 'GC Wk 1 Introduce Yourself to the Class'. Underneath, it says 'Due Aug 31 by 11:59pm' and 'Points 0'. The main content area features a drawing of a person's head with yellow hair, and the text 'Introduce Yourself to the Class' above it. Below the drawing, it asks 'What would you like the others in class to know about you?' and includes a note: 'Be sure to also fill out your Canvas profile.'

Say “Hello” to others in the class . . .
and Meet Your Professor . . .

If you are curious about me, more than you probably want (or ought) to know is available on the **Meet Your Professor page** <http://www.d.umn.edu/cia/faculty/troufs/MeetYourProfessor.html>.

More that you or anyone needs to know is available, with some nice

photos, at http://www.d.umn.edu/~troufs/anthfood/PowerPoint/af-meet_your_prof.pptx.

A while back one of the students seemed to especially like the part where the older folks in my home town of Winsted, MN, talk about the time I burnt the Town Hall by my dad's restaurant down (which I didn't, I only burnt half of the back side off.)

NameCoach Ros-
ter

Library Course
Page

Account

Dashboard

Courses

Calendar

Inbox

Help

Tim Roufs, Brisbane, Australia, 201

Meet Your Professor

Slides: (.pptx)

The Course: Part I

Anthropology graduates, reflecting back on their time with us at UMD, suggested in our surveys that it would be a good idea to tie the individual courses in the Anthropology curriculum together a little more. So that's what we're going to do for much of the next two or three weeks, after we finish the **Orientation**.

This will also help set **the basic analytic, theoretical, and historical framework** for the course. This material should provide you with the **background and analytical tools** to help you with **your class Project**, and help you begin to make sense out of the topics that follow later in the course—a good deal of which will be provided *via* video—and towards the end of the semester with your class presentations.

Some of the **slide sets** for this week are **fairly long, but bear with them as the programs as they provide important information.**

Your Class Project

Start thinking a little bit about [your Class Project](#).

Start thinking about something *that you, personally, are interested in*, and we'll work things out from there.

This Project is something with which you should be able to have *fun*.

It's a good time to have at least a quick look at the information for your class project, which you can find at <http://www.d.umn.edu/cla/faculty/troufs/anth1095/gcproject.html#title>. Your class Project is your Term Paper, plus a short “work-in-progress”.



Demosthenes Practising Oratory (1870)

[Details of Presentation](#)



Charles Dickens (1842)

[Details of Term Paper](#)

Your **[Informal Project Statement](#)**, or Project Proposal, is due by the end of Week 5, **Saturday, 28 September 2019**. Basically that's a short *informal* summary personal statement of what you are interested in doing, how you think you might go about it, and what resources you are thinking about using. It can be as simple as the following:

“For my project I’m thinking about X, or Y, and these are the items I’m thinking about using [add short list]. This is why I’m interested in this/these project(s) [add your reason(s)]. . . .

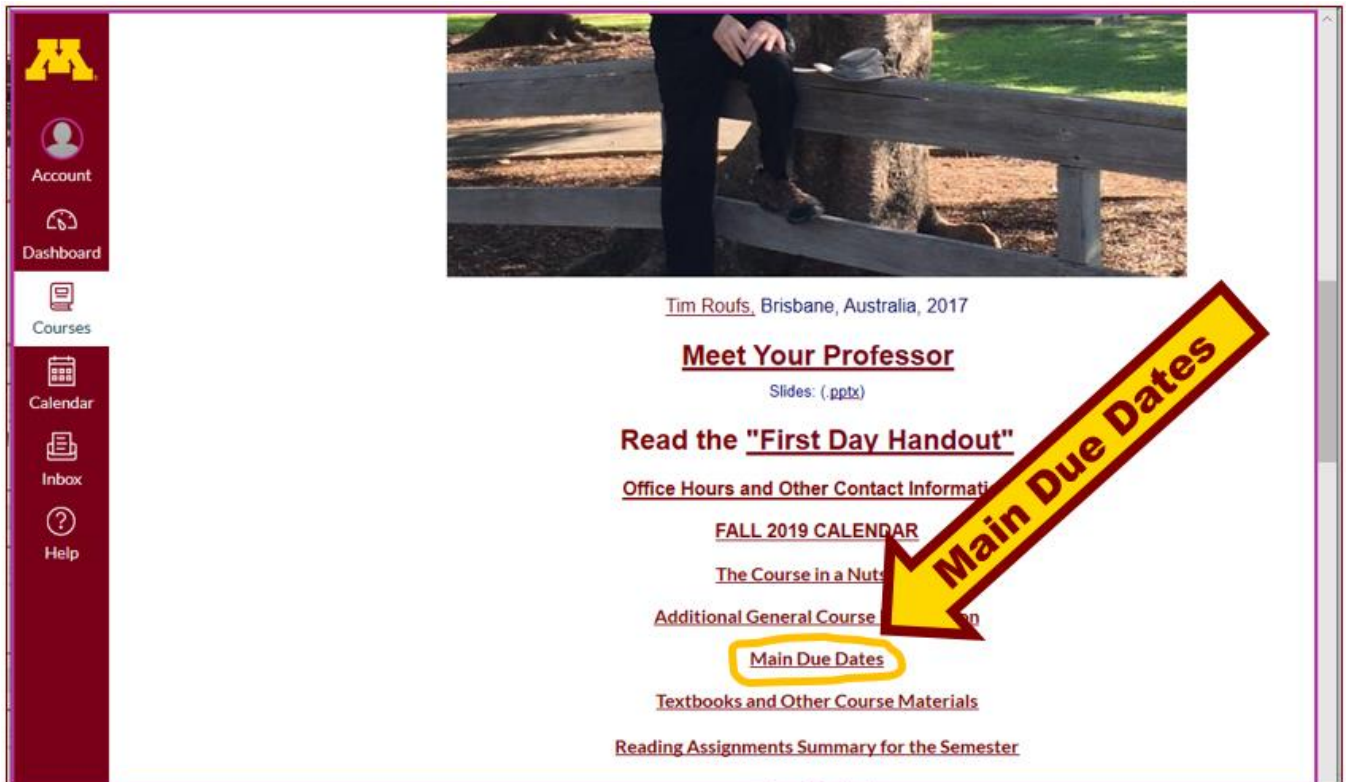
It is an *informal* statement. A more formal statement will come later on (in Week 6, 5 October 2019).

Main Due Dates

are listed at

<<http://www.d.umn.edu/cla/faculty/troufs/anth1095/gcdue-dates.html#title>>

[including Term Paper / Exams / Extra Credit Papers . . . not including weekly *Discussions* and Review assignments . . .]



The screenshot shows a course website interface. On the left is a dark red navigation sidebar with icons and labels for Account, Dashboard, Courses, Calendar, Inbox, and Help. The main content area features a photo of a person sitting on a wooden fence, with the caption "Tim Roufs, Brisbane, Australia, 2017". Below the photo is a list of links: "Meet Your Professor" (with a sub-link "Slides: (.pptx)"), "Read the 'First Day Handout'", "Office Hours and Other Contact Information", "FALL 2019 CALENDAR", "The Course in a Nutshell", "Additional General Course Information", "Main Due Dates" (circled in yellow), "Textbooks and Other Course Materials", and "Reading Assignments Summary for the Semester". A large yellow arrow with the text "Main Due Dates" points to the circled link.

Main Due Dates for Understanding Global Cultures

For a list of all of the **exam** and **weekly assignment** dates please see your  **Gradebook**

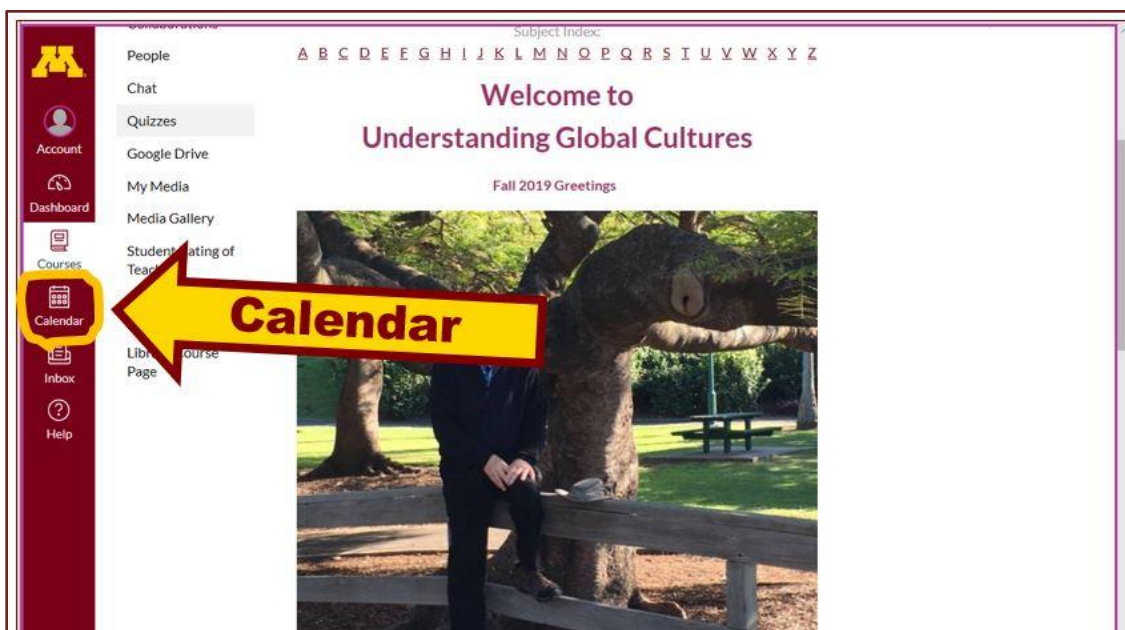
The **weekly assignments** (Discussions, film feedbacks . . .) are generally due at the end of the week in which they were assigned.

As I mentioned last week, **for the first part of the course** much of the material for the week will be presented in the form of text materials and slide materials. **In the second section** of the semester, once you have mastered the basic information relating to Global Cultures, we will look (generally comparatively, *cf.*, Main Characteristics of Anthropology in Week 01) at a series of video materials from around the world. **The final section** will focus on your research projects.

Assignments and Events

... **this week** are listed on your **”Calendar”**.

Be sure to check the details of the **activities and assignments** of the week in your 🌐 **canvas** folder. With the Week 2 Activities we'd like to find out a little bit about your background and thoughts on Global Cultures topics. . . .



This Week's "Calendar"

| 1 | 2 | 3 | 4 | 5 | 6 | 7 |
|----------------------------|-------------------------------|--|---|--|--|--|
| <p>📄 1a GC Week 2 Memo</p> | <p>📅 UM Labor Day Holiday</p> | <p>📄 11a CLASS ON-LINE</p> | <p>📄 (optional) GC Wk 2 REM How to turn your Canvas calendar on-off</p> | <p>📄 11a CLASS ON-LINE</p> | <p>📄 GC REM All items due BY Saturday, not ON Saturday</p> | <p>📄 GC Wk 2 Meet Your Professor (.pptx)</p> |
| | <p>📄 1a GC Wk 2 Readings</p> | <p>📄 11a GC Wk 2 Selective Attention Tests</p> | | <p>📄 11a GC Wk 2 "Other Important Terms" (.pptx)</p> | | <p>📄 GC Wk 2 Say "Hello" to Others in the Class</p> |
| | | <p>📄 11a GC Wk 2 Video: Many Ways to See the World (30 min.)</p> | | <p>📄 11a GC Wk 2 Pre Assessing Yourself</p> | | <p>📄 GC Wk 2 Start Thinking about Your Semester Project Copy</p> |
| | | <p>📄 12:20p GC Wk 2 For Fun Trivia: The citizens of what country complain that</p> | | <p>📄 11a GC Wk 2 Review and Continue Main Characteristic of Anthropology</p> | | |

NOTE that this week (and next) our classes are on-line only. We will not meet this week (or next) in Cina 214. If you have any questions about the assignments or class materials, please e-mail troufs@d.umn.edu.

On-line Video:

Many Ways to See the World: A Thirty-minute Tour of World Map Images

(30 min., 2005, CC, UM Duluth Library Multimedia - DVD GA105.3 .M35 2006)

[On-line access](#)

[course viewing guide](#)

"Presents a fascinating exploration into the minds of twelve mapmakers. Discover how their unique backgrounds, philosophies, values, and politics led each to select a particular mathematical formula to create their maps. Learn about the impact those world images have had on us, consciously and unconsciously."

"Special features: Includes over 70 PowerPoint images with links to map resources; preview: Arno Peters: Radical map, remarkable man; radio interviews; book excerpts; and more."

Based on the book: *Seeing through Maps* / Denis Wood, Ward Kaiser, and Bob Abramms.

Publisher Amherst, MA : ODT, Inc.

Selective Attention Tests

Anthropological analytical skills include careful observation of behavior. We will be visiting many parts of the globe as we go along in the course—so you will have lots of opportunities to practice your observational skills.

So this week take the two short minute-and-a-half **tests of your observational skills** before you continue your intensive look at the wide variety of Global Cultures video materials that we will be viewing and re-viewing virtually every week of the semester. You should take those short tests this week.



**Take the Two (Very Short)
Selective Attention Tests in Preparation for Watching the
many Videos throughout the semester.**

(Be sure to take both tests. Read the instructions carefully.)

First, take the . . .

Selective Attention Test

<http://www.youtube.com/watch?v=vJG698U2Mvo>

Read and follow the directions carefully.

(Be sure to also count the *bounce* passes.)



When you are finished with the Selective Attention Test, watch . . .

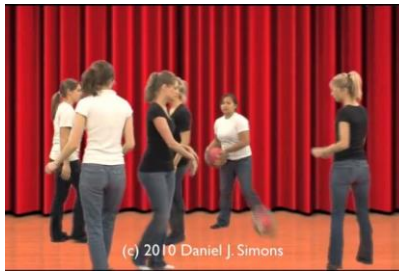
The Monkey Business Illusion

http://www.youtube.com/watch?v=IGQmdoK_ZfY

(It too is short: 1:42)

Again, read and follow the directions carefully.

(And as with The Selective Attention Test, be sure to also count the *bounce* passes.)



Self-Assessment

This week please take a short survey to give us an idea of what your views and takes are on Global Cultures. Once every one has completed this feedback, everyone will be able to see the results.

Before you get deep into the course, briefly describe your experiences with and ideas about Global Cultures, and what you already know about things related to Understanding Global Cultures.

At different points during the semester we will return to these questions to have a look at the various subjects.

For Fun Trivia


This week our **trivia questions for fun** relates to maps . . .

The citizens of what country complain that their country keeps getting left off of maps?



[\(Answer\)](#)

Check it out.

If you have any **questions** right now, please do not hesitate to post them on the  **canvas** Course “Chat”, or e-mail troufs@d.umn.edu, or stop by Cina 215 if you’re in the neighborhood [[map](#)].

Best Regards,

Tim Roufs

<http://www.d.umn.edu/~troufs/>